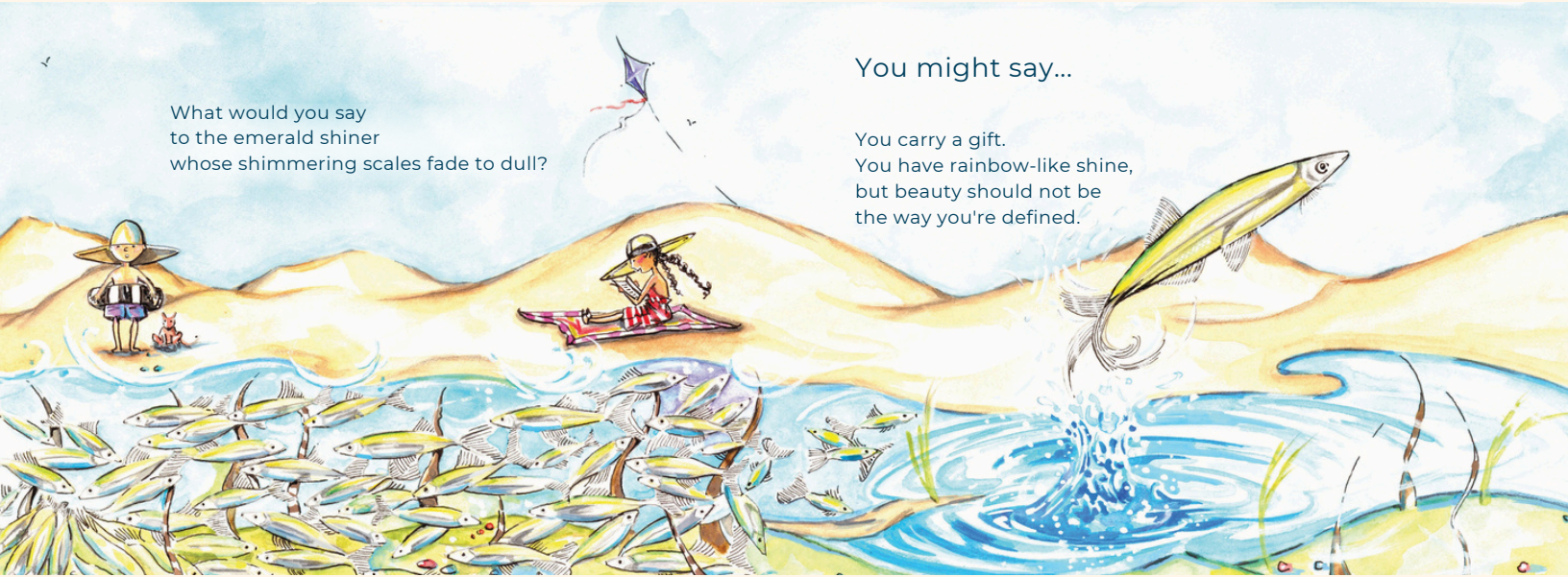


Expectation: Grade 4

CI.6 Identify the narrator's point of view, including first, second, or third person, in a variety of texts, and describe the advantages and disadvantages of the approach used in each story.

Look carefully at the picture below. Notice the picture and word clues.



What would you say
to the emerald shiner
whose shimmering scales faded to dull?

You might say...

You carry a gift.
You have rainbow-like shine,
but beauty should not be
the way you're defined.

What is the narrator telling us about beauty?



Melanie
THE EDUCATOR



Which human characteristics does the narrator think are important?

The narrator uses different approaches to share their message, such as rhyme and animals as the subjects. Choose one of these approaches, (rhyme, animal subjects) and list the advantages and disadvantages of using this approach to getting readers to understand the messages in the story.

Advantages	Disadvantages

